



SAMPSON COUNTY 911 & ES FACILITIES

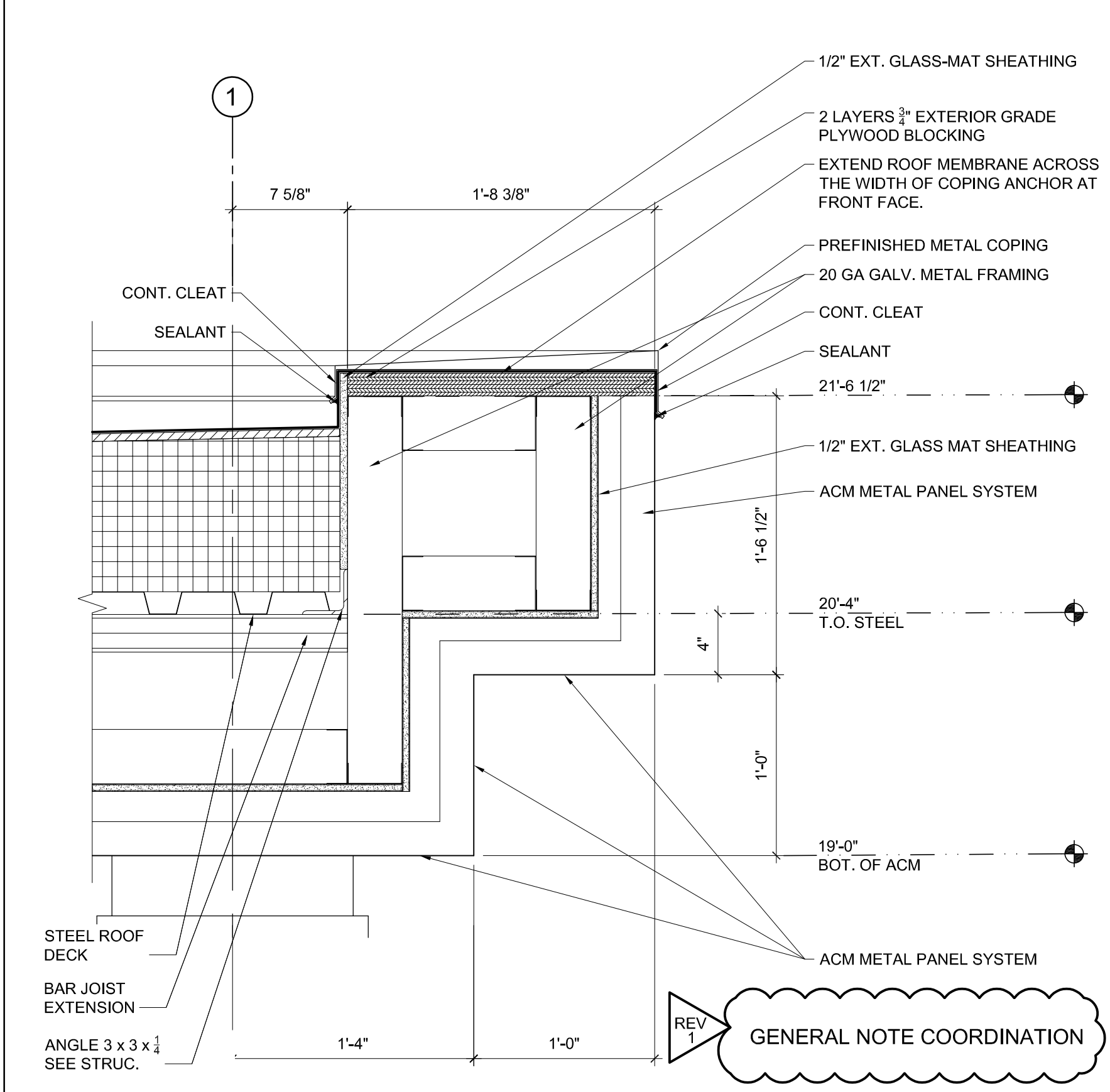
CLINTON,
NORTH CAROLINA

CONSTRUCTION
DOCUMENTS

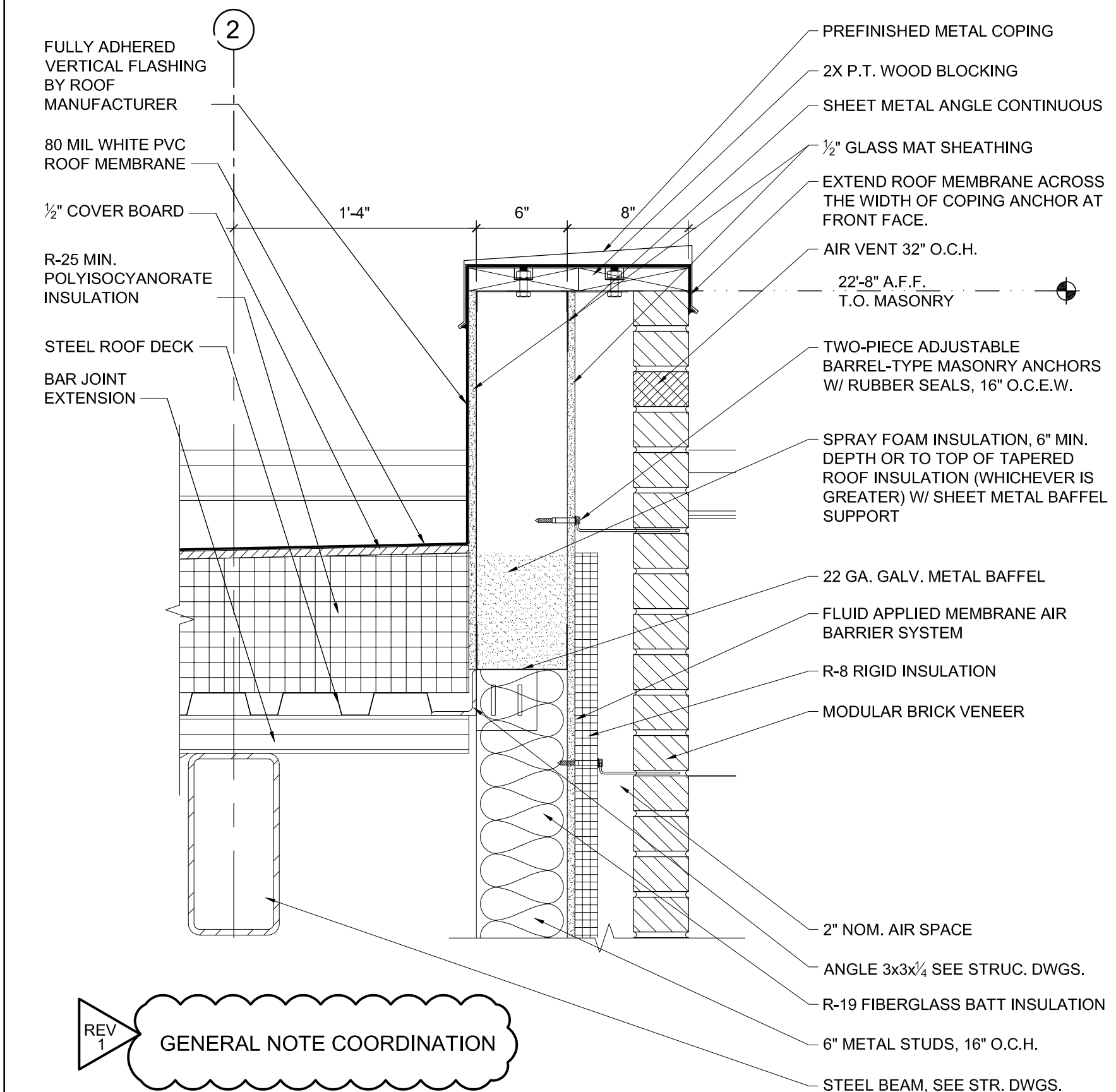
SECTION DETAILS

DATE	12.04.2020	
PROJECT NO	20003	
REVISIONS		
NUM.	DATE	DESCRIPTION:
REV1	12/17/20	REVISION 01

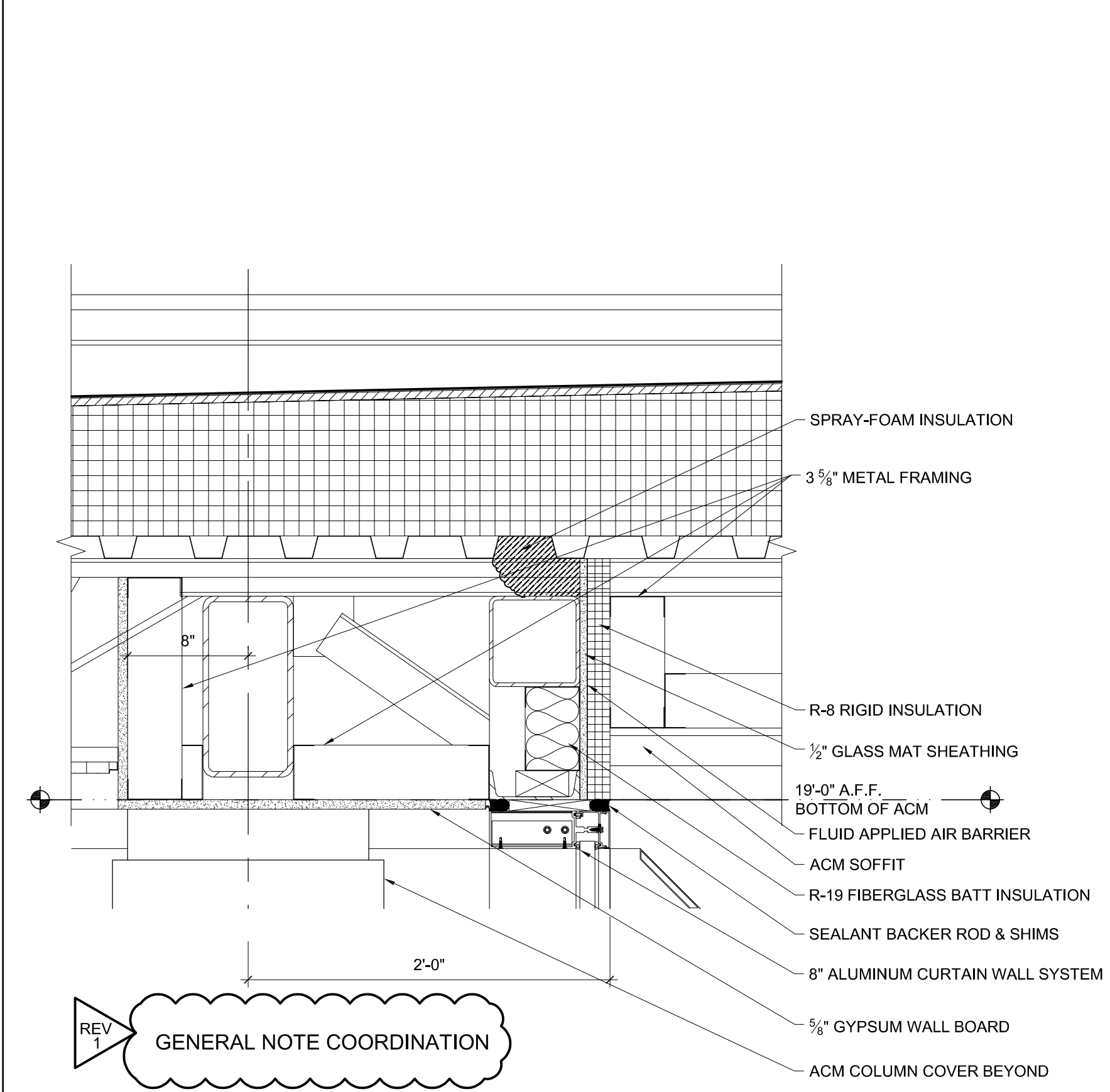
THIS DRAWING IS THE PROPERTY OF ADW ARCHITECTS, P.A. AND SHALL NOT BE REPRODUCED OR COPIED IN WHOLE OR IN PART. IT SHALL NOT BE USED ON ANY OTHER PROJECT OR GIVEN TO ANY OTHER COMPANY OR AGENCY WITHOUT THE CONSENT OF ADW ARCHITECTS, P.A.



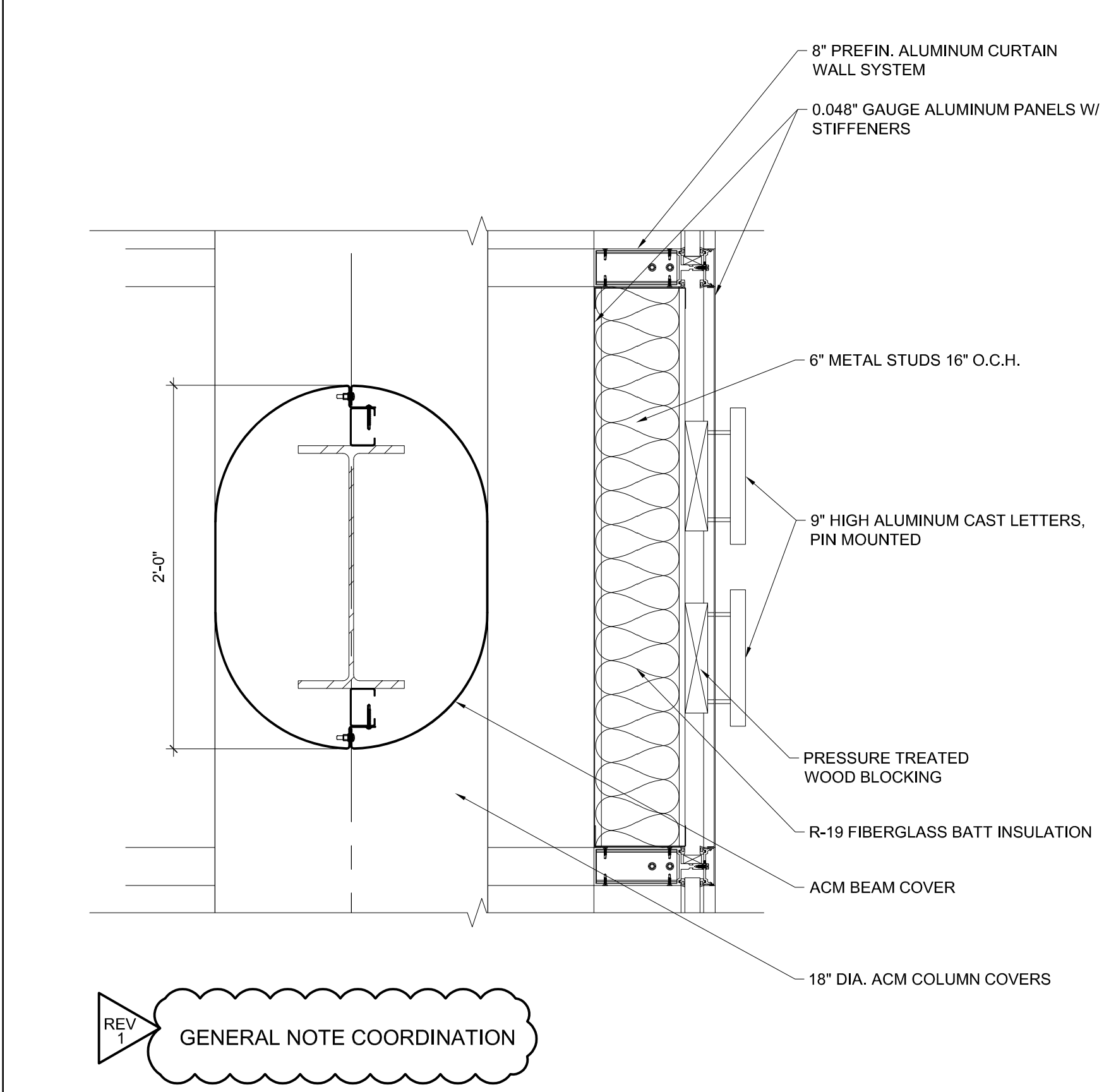
SECTION DETAIL SCALE: 1 1/2" = 1'-0" 03



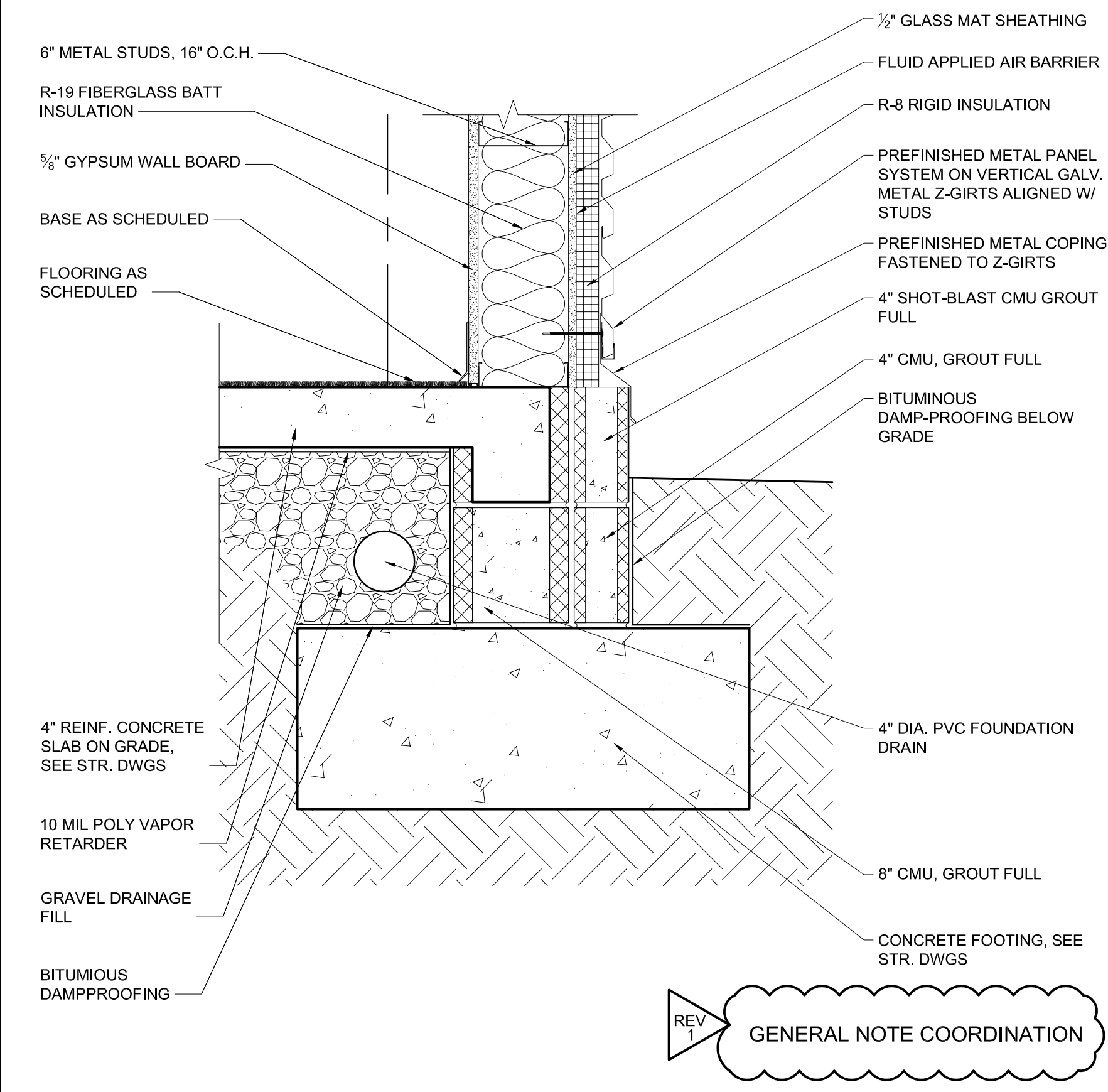
SECTION DETAIL SCALE: 1 1/2" = 1'-0" 02



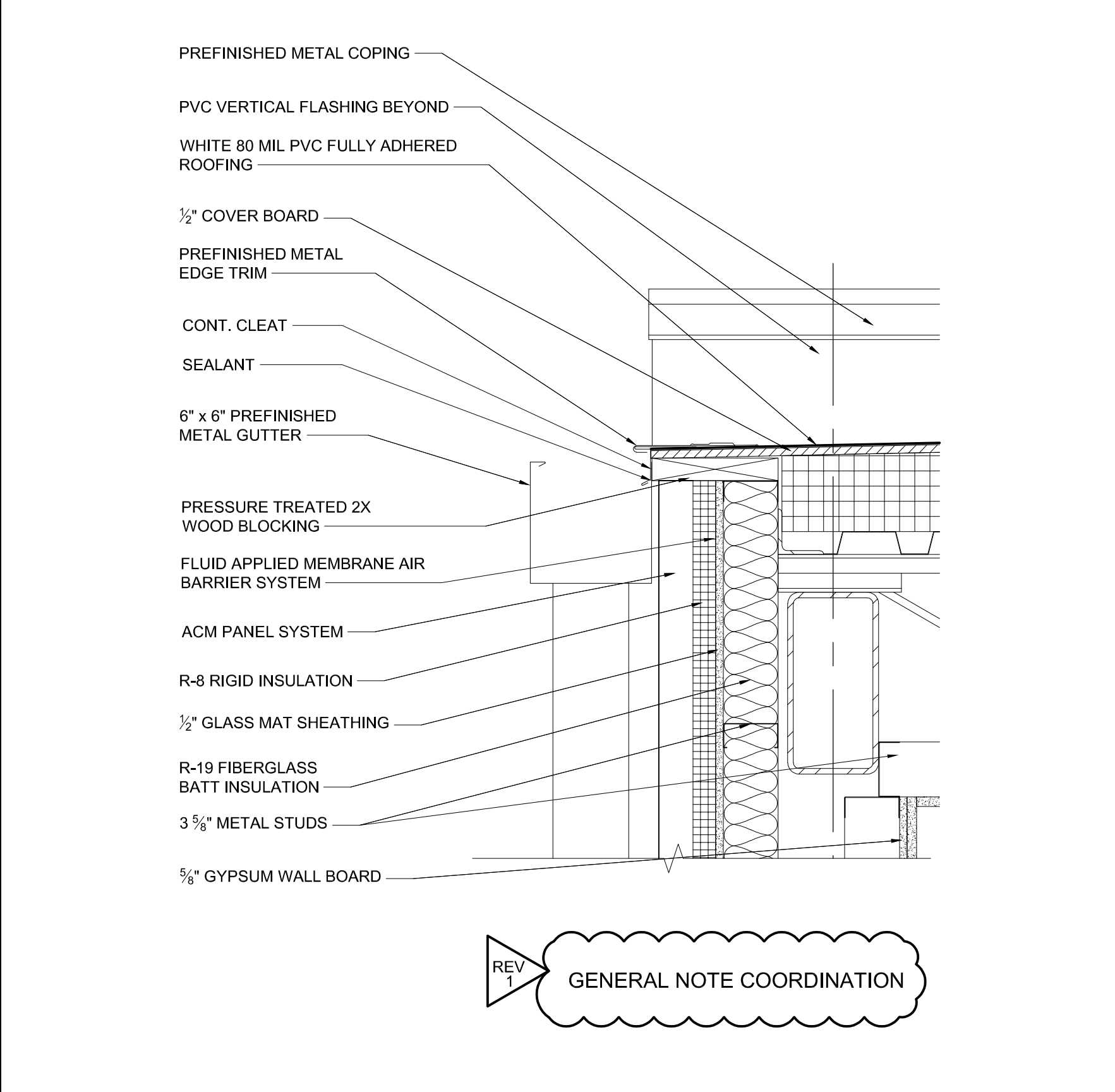
SECTION DETAIL SCALE: 1 1/2" = 1'-0" 06



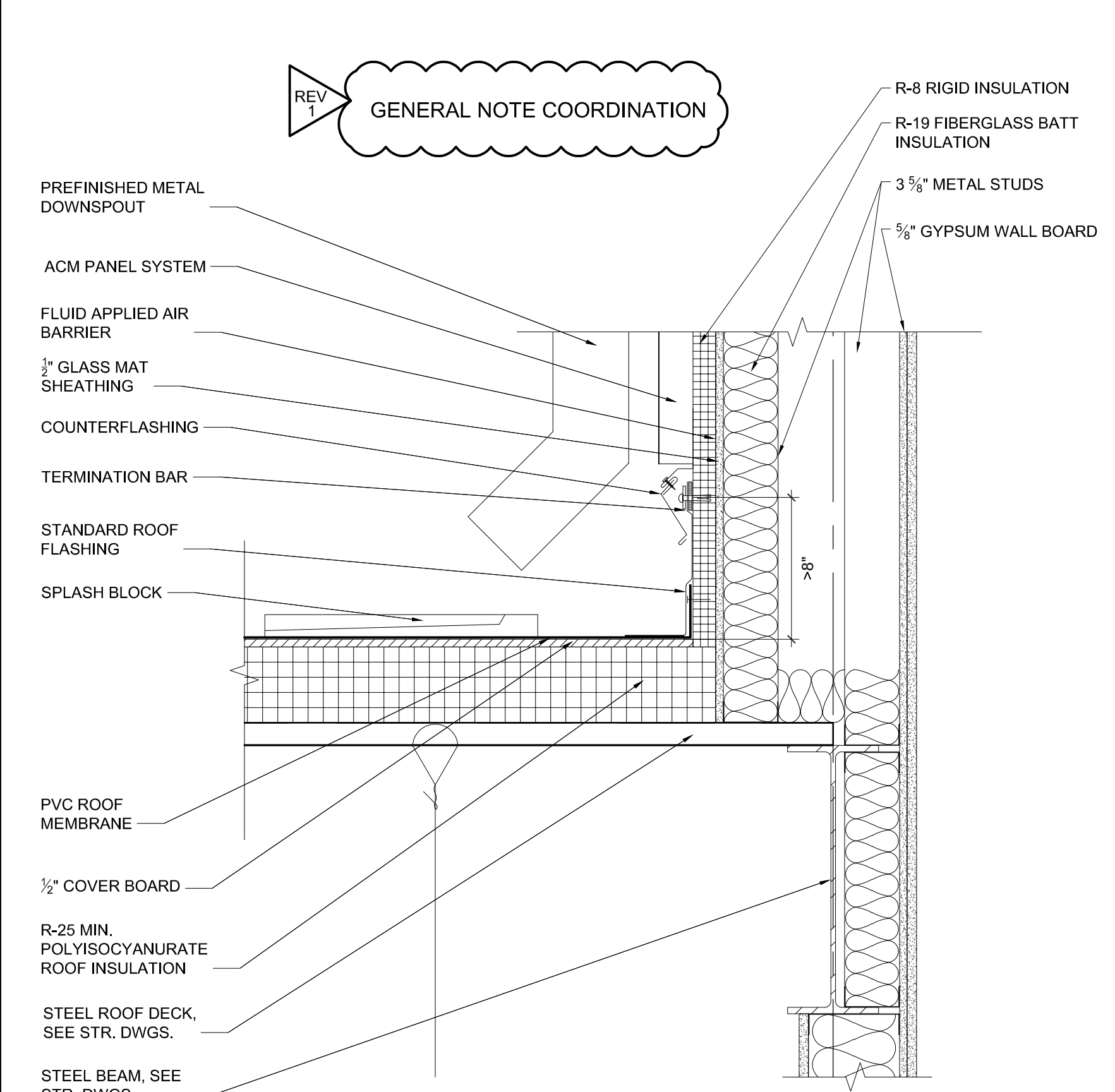
SECTION DETAIL SCALE: 1 1/2" = 1'-0" 05



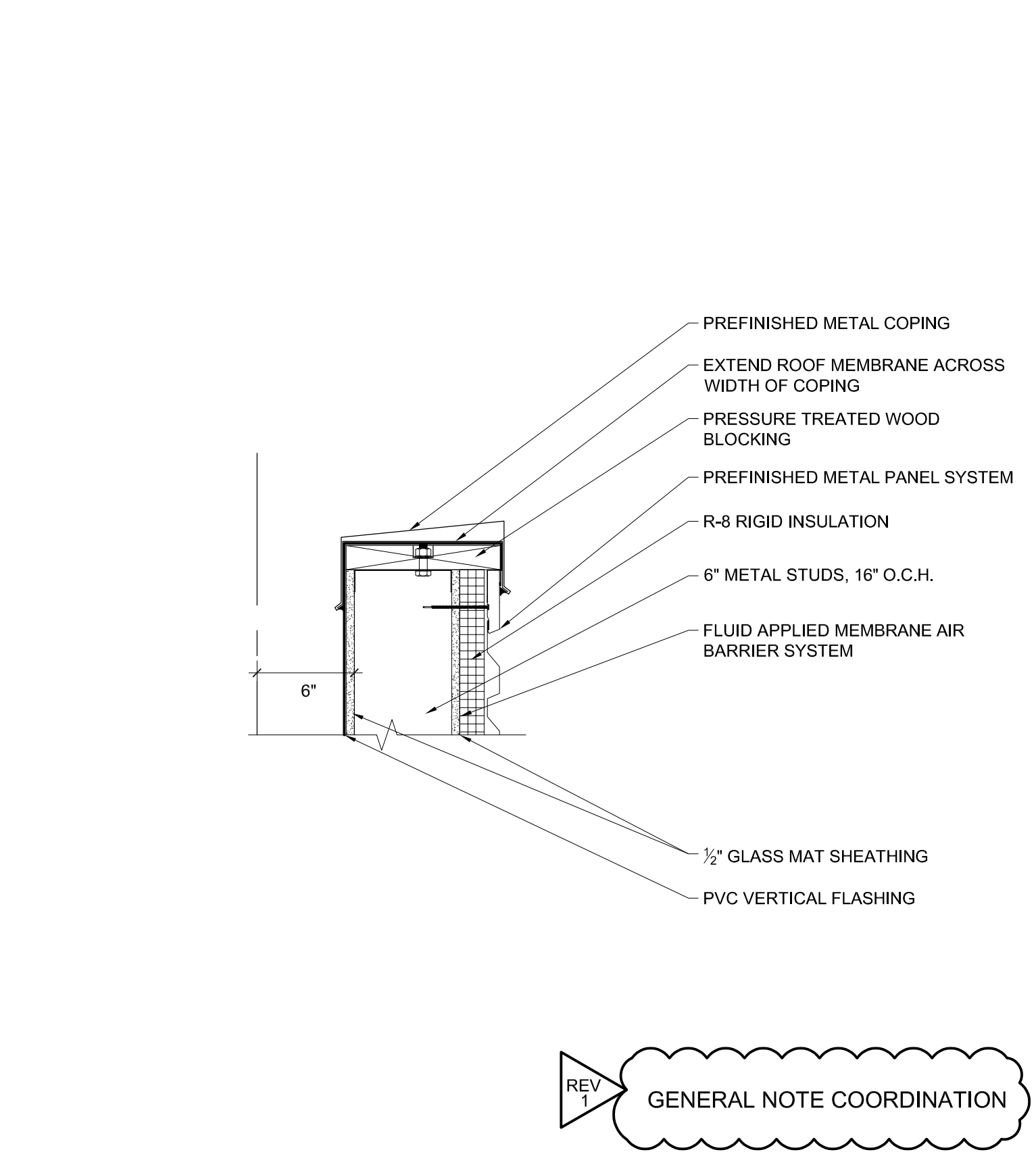
SECTION DETAIL SCALE: 1 1/2" = 1'-0" 09



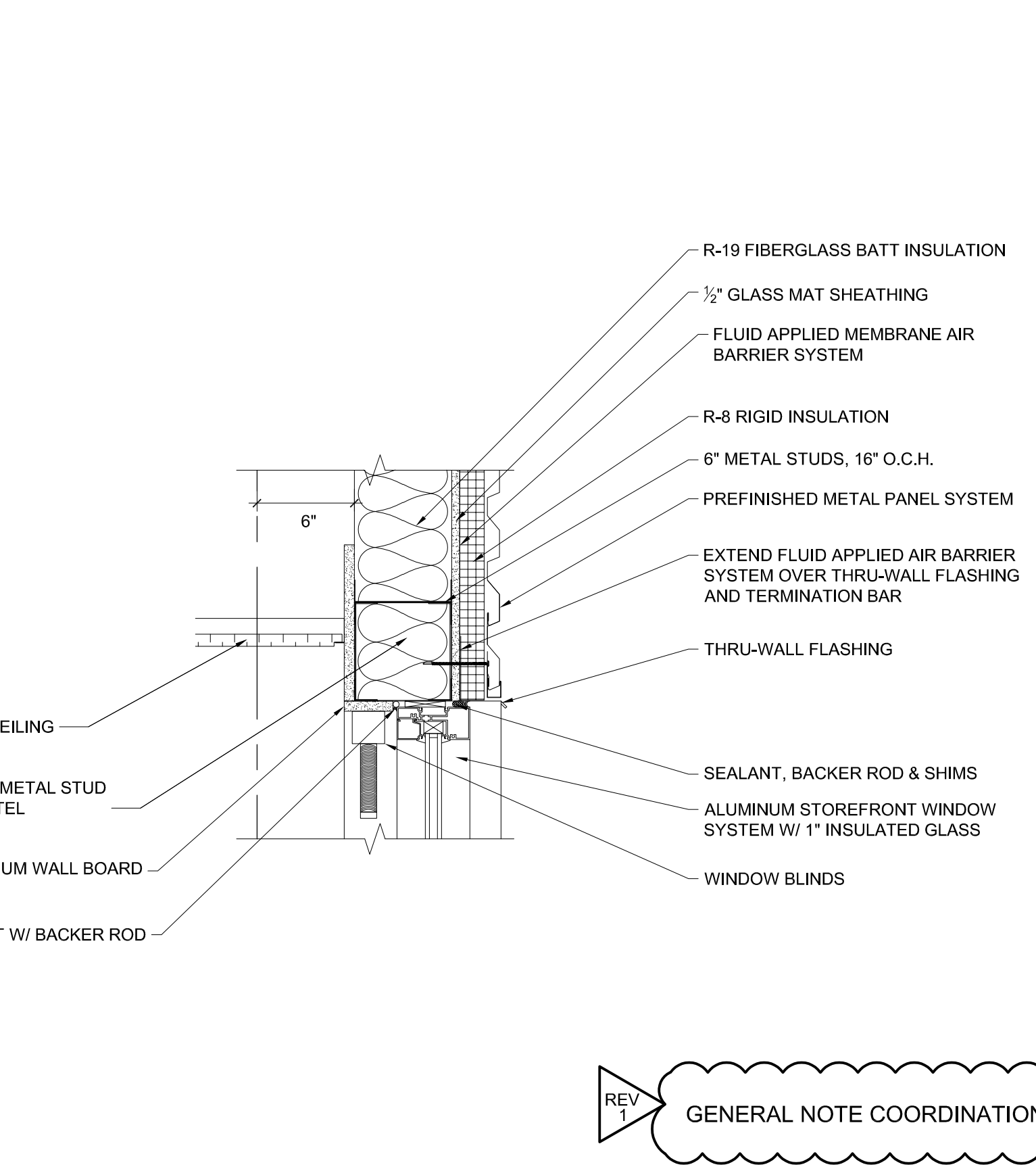
SECTION DETAIL SCALE: 1 1/2" = 1'-0" 08



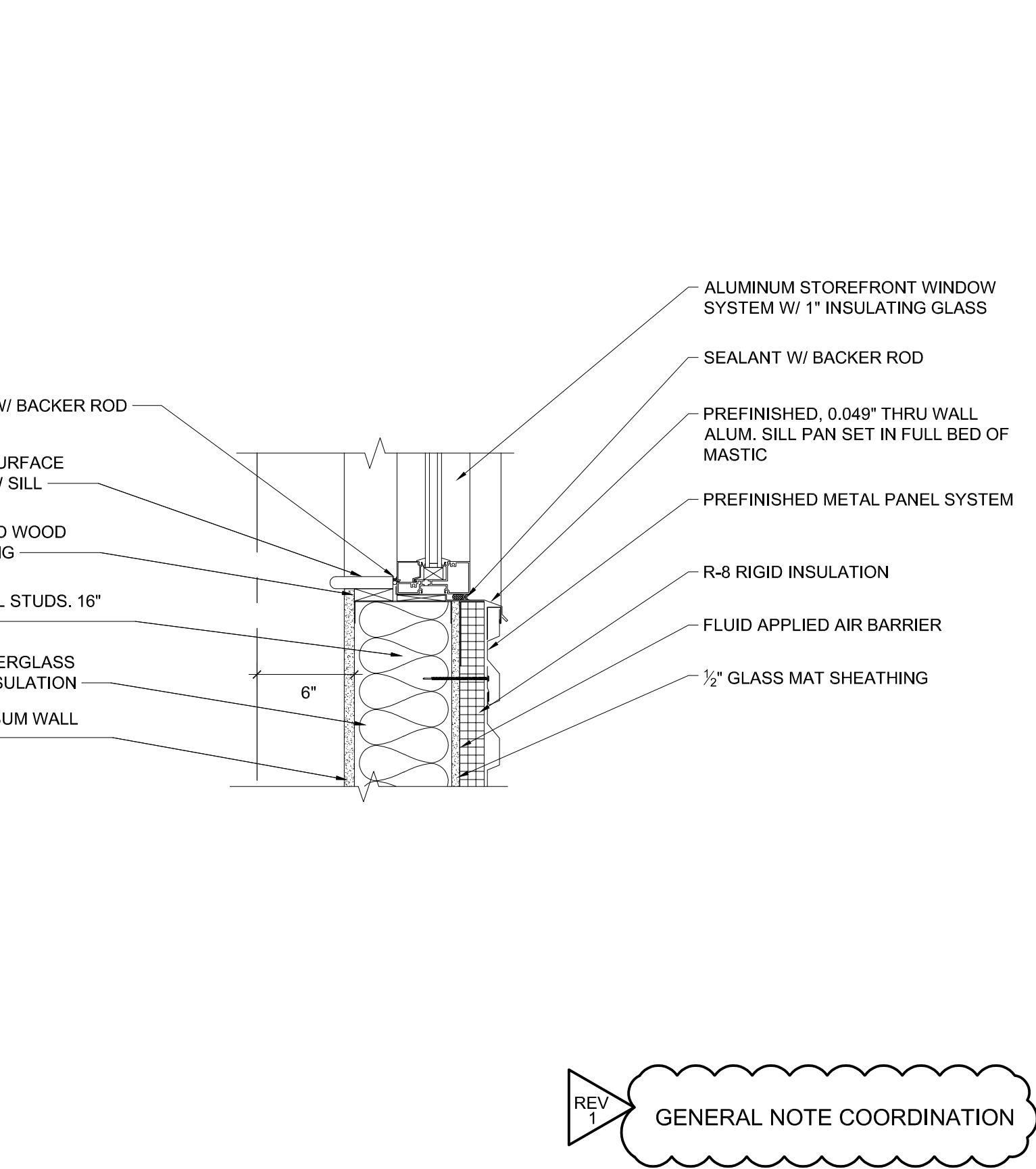
SECTION DETAIL SCALE: 1 1/2" = 1'-0" 07



SECTION DETAIL SCALE: 1 1/2" = 1'-0" 12



SECTION DETAIL SCALE: 1 1/2" = 1'-0" 11



SECTION DETAIL SCALE: 1 1/2" = 1'-0" 10